

HSM SECURIO C18



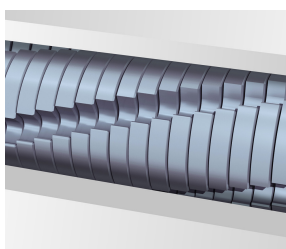
HSM SECURIO C18 document shredder

Compact, functional and convenient. With cutting rollers made from hardened steel and a pressure-sensitive safety element. The quiet document shredder with a removable waste container – for demanding users in the private sector or small office.

Technical data

Order number:	1911123	Intake width:	9.06"
EAN	4026631056823	Container volume / collecting:	6.6 gal
Cutting type:	strip cut	Collection volume in sheets (80 g):	165
Cutting size:	1/4"	Noise level (idle operation):	ca. 55 - 58 dB(A)
Security level (DIN 66399):	E-2 O-2 P-2 T-2	Width x Depth x Height:	14.37" x 11.02" x 21.34"
Cutting capacity in sheets 80g/m²:	17 - 19	Weight:	21.61 lb
Power consumption:	360 W	Shredder material:	Paper, Staples and paper clips, Credit card
Voltage / Frequency:	110-120 V / 60 Hz		

Product information



The hardened steel cutting rollers with a lifetime warranty can easily cope with staples and paper clips and guarantee durability.

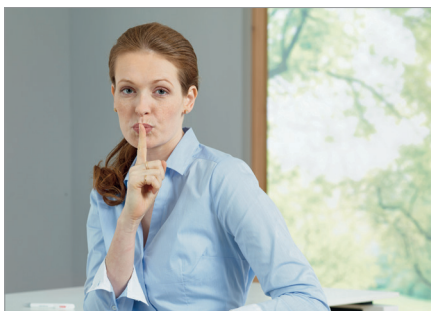


In stand-by mode, intelligent control programme EcoSmart ensures there is an exceptionally low power consumption of 0.1 watts.



The full bin is indicated via the display and the machine switches off automatically.

HSM®



Quiet operation

The quiet operating mode minimises noise development in the workplace which is an important consideration for your staff.



Blue Angel

The document shredder has been awarded the Blue Angel certificate for its durable construction, low energy consumption and the use of environmentally friendly materials.



Anti-paper jam function

The paper feed with overload protection reduces paper jams and sustains the high throughput of paper.



High level of user safety

User safety is paramount. A slight pressure on the safety element immediately stops the paper feed and prevents unintentional entry into the machine.



Automatic start/stop

The operation is very easy: the device starts automatically when fed paper and automatically stops after shredding is complete.

